



The TIME Collaborative

Creating Schools with More & Better Learning Time



Rochester School Kick-off Meeting – November 5, 2012



NATIONAL CENTER ON
TIME & LEARNING

© 2012 National Center on Time and Learning; www.timeandlearning.org



Today's Primary Objectives

- ✓ Ensure that all school planning teams have a common knowledge of the TIME Collaborative & have a fully inclusive planning team in place
- ✓ Assign owners to the key next steps your school needs to take to prepare for the launch of the planning process on November 19

Today's Agenda

- ❖ Overview of the TIME Collaborative
 - Expectations
 - Timeline
 - The Planning Process
 - Assembling Your School ELT Planning & Redesign Team
 - 7 Essential Elements of High Quality Expanded Time Schools
- ❖ An Introduction to the School Time Analysis Tool (STAT)
- ❖ Building Support for Your New School Day and Year
- ❖ Preparing for the Launch of the Planning Process

TIME Collaborative: What It Is

- A multi-year initiative to develop **high-quality** and **sustainable** expanded learning time schools in 5 selected states
- Participating schools to **add 300 hours of learning time for all students** beginning in SY2013-14
- **Funding for implementation** of expanded day and/or year through district and state resources and federal funds using new flexibilities afforded by the ESEA waiver process (e.g. Title I SES, 21st Century CLC, SIF, etc)

TIME Collaborative: What It Means For You

As a selected school in Rochester, you have the opportunity to:

- **Rethink** your school day and/or year
- **Reengineer** your school schedule to better meet the needs of students and teachers
- Receive **support** from the district and NCTL
- Join a **network** of pioneering educators from across Rochester and the country

TIME Collaborative: Two Expectations

High-quality

High quality ELT schools:

- ✓ Undergo an **inclusive** planning process
- ✓ Leverage their additional time according to **7 Essential Elements**



Sustainable

Sustainable ELT schools:

- ✓ Take advantage of **existing and newly available** funding sources
- ✓ Utilize **cost-lowering** strategies to staff the expanded schedule

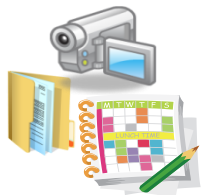
TIME Collaborative: Timeline



Final Selection:

- Each school submits final plans in late April
- Schools with plans that meet the standards of high quality and sustainability will implement in fall 2013

TIME Collaborative: The Planning Process



- ❑ **Detailed resources** such as sample schedules, implementation guides and videos



- ❑ **On-line learning** network with resources and opportunity for schools to communicate virtually



- ❑ **Learning from ELT practitioners** from high-performing schools
 - Webinars
 - School Tours

TIME Collaborative: The Planning Sessions

What are the Planning Sessions?

- Opportunity to learn about best practices of high quality ELT schools
- Time for small teams to meet and rethink their school schedules to better meet the needs of students and teachers
- Opportunity for teams to network with other planning teams from other schools in the district

Who Participates?

- Typically a 5-6 member sub-set of a school's Instructional Leadership Team representing a broad range of disciplines, experience, and roles
- Include teachers, union representatives, principal, other administrative staff, parents, and school partners
- Key district personnel charged with support schools' efforts

TIME Collaborative: Role of the Planning Team

- All Planning Team members (including principal) attend all sessions
- Work with NCTL coach to achieve planning benchmarks prior to each session and throughout planning process
- Communicate with, get input from, and build support with colleagues, parents, and community partners
- Be bold, creative, and determined to create solutions and develop an Expanded Learning Time Plan by April
- Appoint a team member to serve as the point person to the district
- Identify 2-3 team members to serve on a Reengineering Subcommittee—these individuals should be experts in scheduling

TIME Collaborative: 7 Essential Elements

High quality ELT schools leverage time to empower each student with the knowledge, skills, and experiences they need to succeed in college and career

- 1 Focused Schoolwide Priorities
- 2 Rigorous Academics
- 3 Differentiated Supports
- 4 Frequent Data Cycles
- 5 Targeted Teacher Development
- 6 Engaging Enrichment
- 7 Enhanced School Culture



Where Do We Start?

Making Every Minute Count

NCTL's School Time Analysis Tool (STAT)

Start With the Time You Have Now

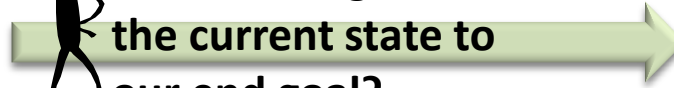
Current State: Pockets of Non-Learning Time Each Day

Essential but time consuming activities:

- Taking attendance
- Bathroom breaks
- Transitions
- Classroom procedures



How do we get from
the current state to
our end goal?



End Goal: Maximizing Academic Learning Time for All Students

- Academic Learning Time is time students gain and retain knowledge
- Routines and other non learning activities are highly efficient

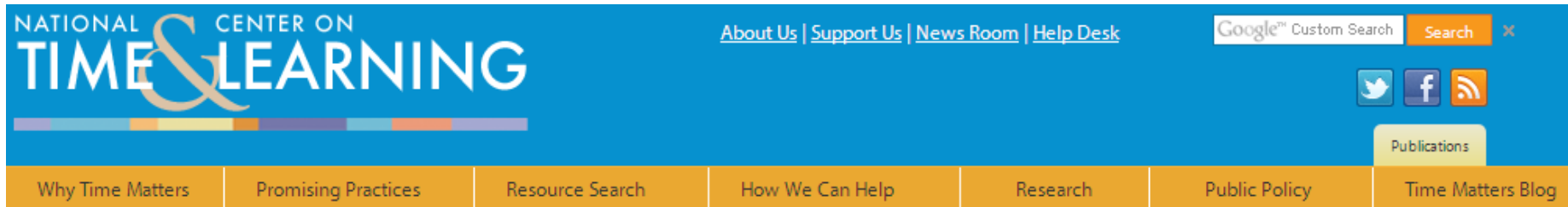
Assessing current time
use is the first step to
creating a culture that
VALUES TIME



Nearly all schools can identify existing time that could be better used

The best expanded learning schools carefully rethink their entire schedule, rather than simply tacking on additional time

STAT Login Screen



NATIONAL CENTER ON
TIME & LEARNING

[About Us](#) | [Support Us](#) | [News Room](#) | [Help Desk](#)

Google™ Custom Search Search X

Twitter Facebook RSS

Publications

Why Time Matters Promising Practices Resource Search How We Can Help Research Public Policy Time Matters Blog

STAT Login

User Guide

About STAT

School Time Analysis Tool (STAT) Login

Please log in to STAT by entering your email address twice.

This tool works best with current browsers; older browsers may need to be updated.

For assistance updating your browser, visit [Browse Happy](#).

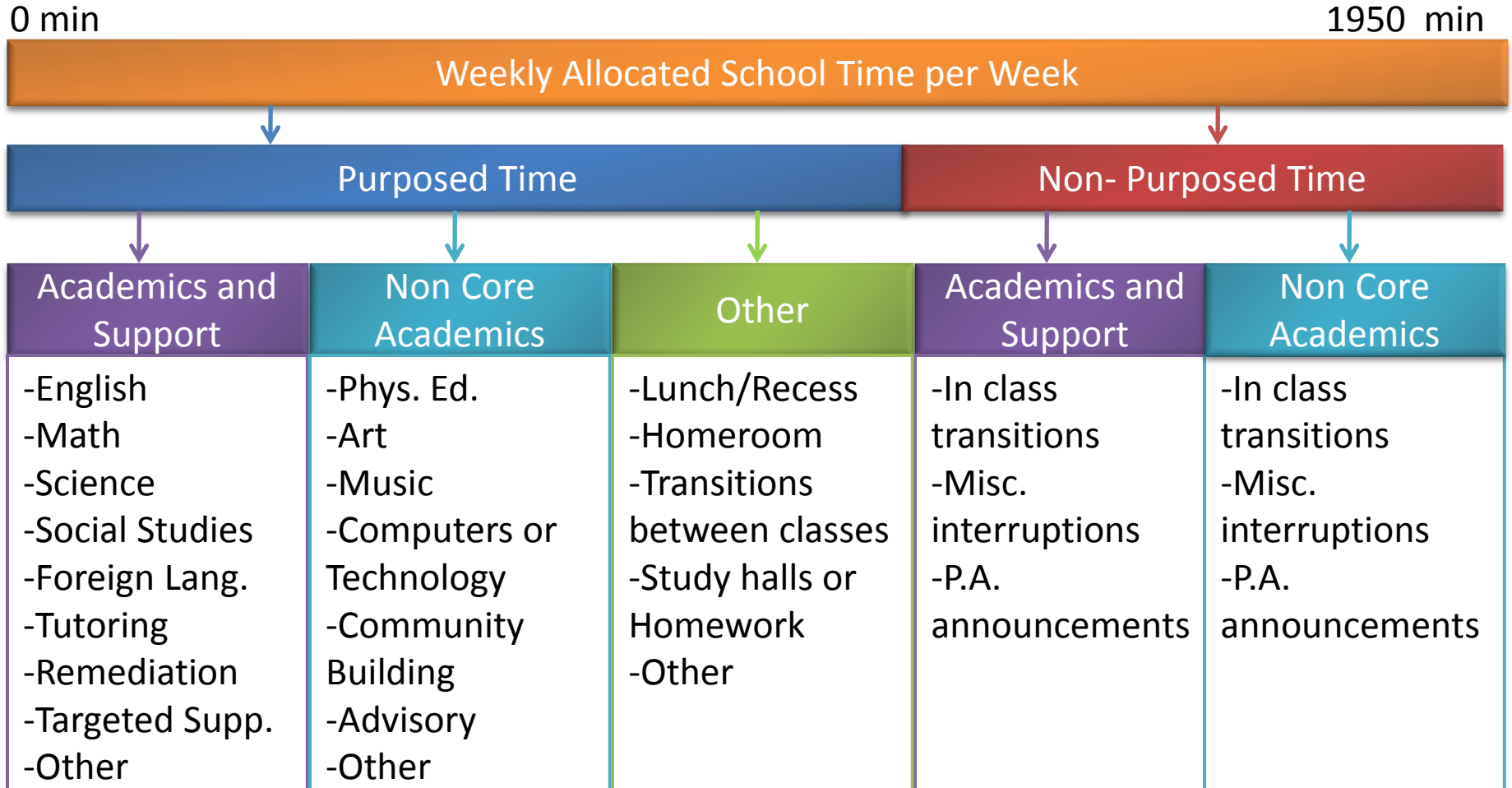
Enter your email address:

Re-enter your email address:

Log in

Access the STAT through this link:
<http://nctl.iontier.com/Login.aspx>

Categorizing School Time



Conducting a School Time Analysis

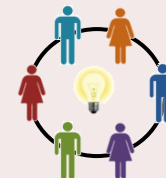
WHAT YOU NEED

- Internet access
- Student schedules
- School calendar
- Information on activities that disrupt instructional time



WHO YOU NEED

Representative team of administrators, teachers, staff, and partners if applicable



HOW LONG IT WILL TAKE

Approximately 1 – 1.5 hours to enter the data and review findings for each schedule you want to analyze



FOLLOW-UP

DURING Session 2:

- Share findings with your full ELT planning team
- Prioritize a few areas for improvement and action steps

AFTER Session 2:

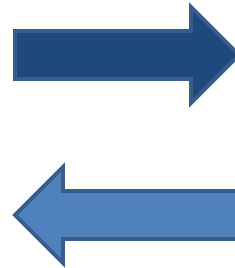
- Share with full faculty
- Follow-through on action steps



Building Support for Your New School Day and Year

Building Support For Your New School Day

**A School's
Instructional
Leadership Team
typically serves
as the Planning
& Redesign Team**



**A representative
sub-group
should attend
the 6 planning
sessions &
report back**

Frequent communication with FULL FACULTY is essential during the planning process to keep staff updated on the development of your redesign plan and to provide opportunities for their participation

Building Support For Your New School Day

Communicate early and often to:

- Build support and enthusiasm for the effort
- Create a common sense of purpose
- Convey a sense of urgency
- Reduce anxiety and misconceptions by providing concrete information and regular updates

Building support for your new school day by engaging key stakeholders will be an ongoing theme of the planning process

Next Steps

1. Identify stakeholders that need to hear about TIME Collaborative in the next few weeks and determine how you will reach out to them
2. Identify your School Planning Team, including point person for district & Reengineering Subcommittee members